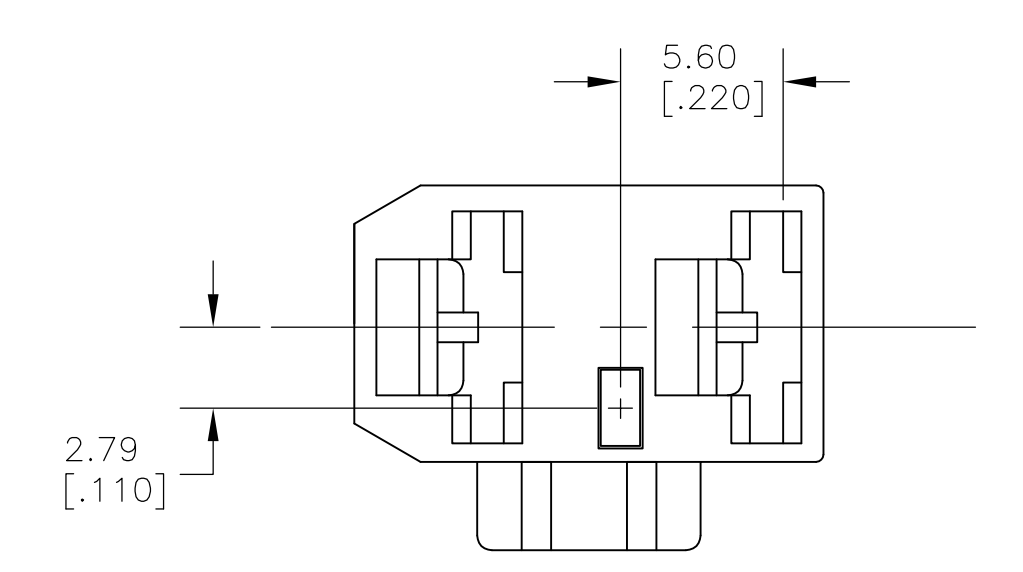
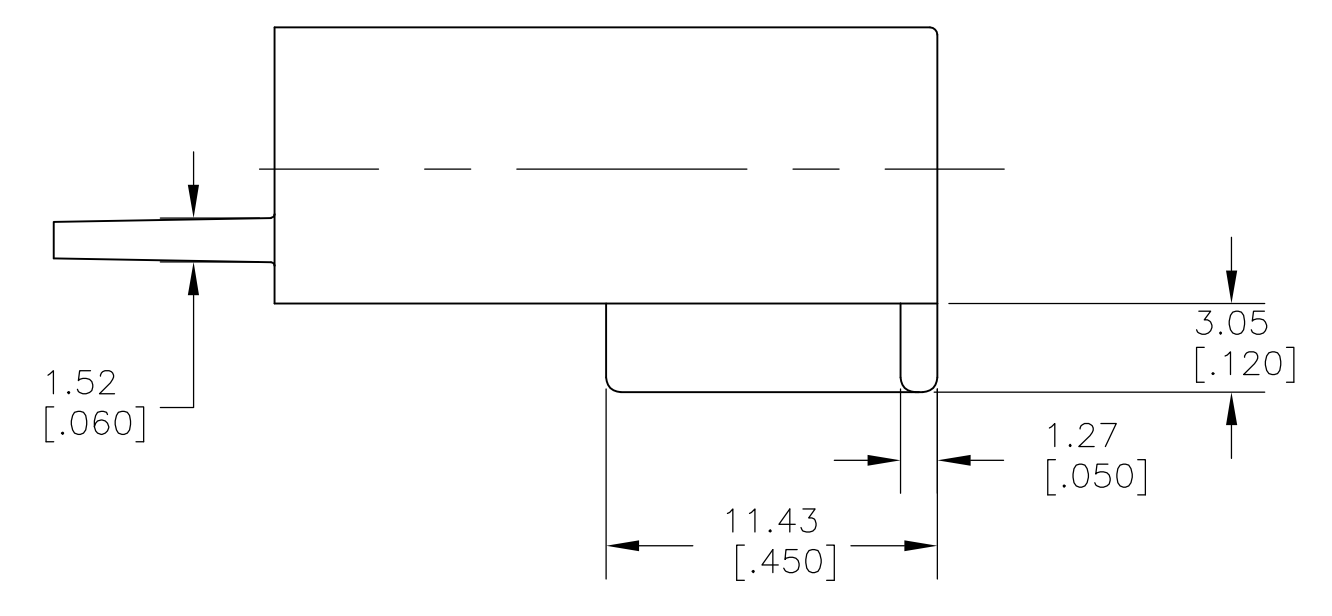
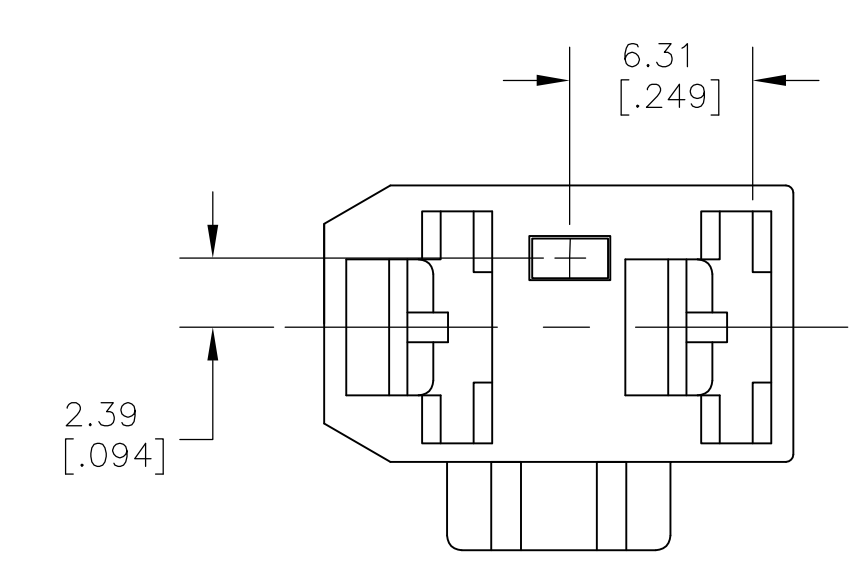


1 FITS 6.35 [.250] SERIES FASTON RECEPTACLES.  
 2 PRELIMINARY - NOT FOR PRODUCTION

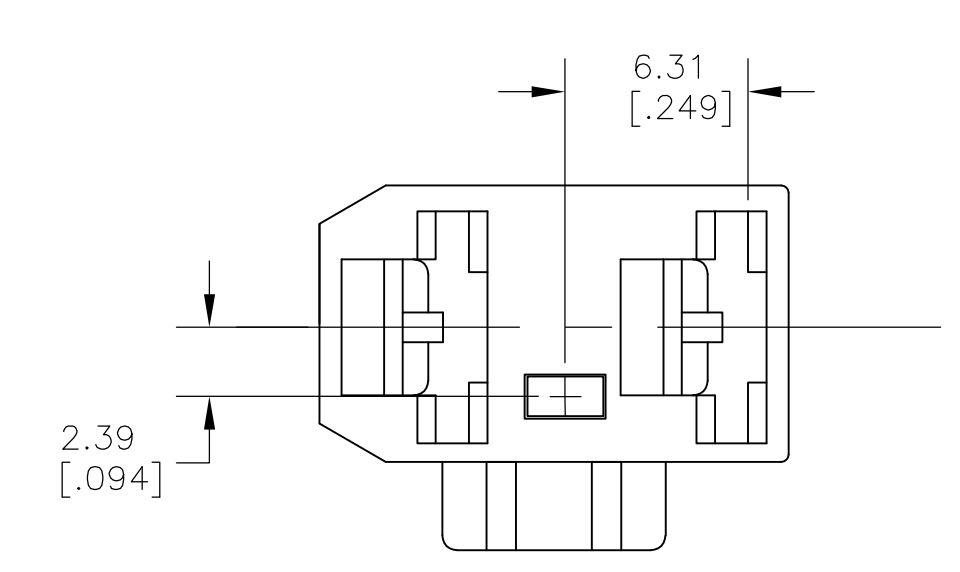
SEE KEYING VIEWS FOR LOCATION PER PART NUMBERS



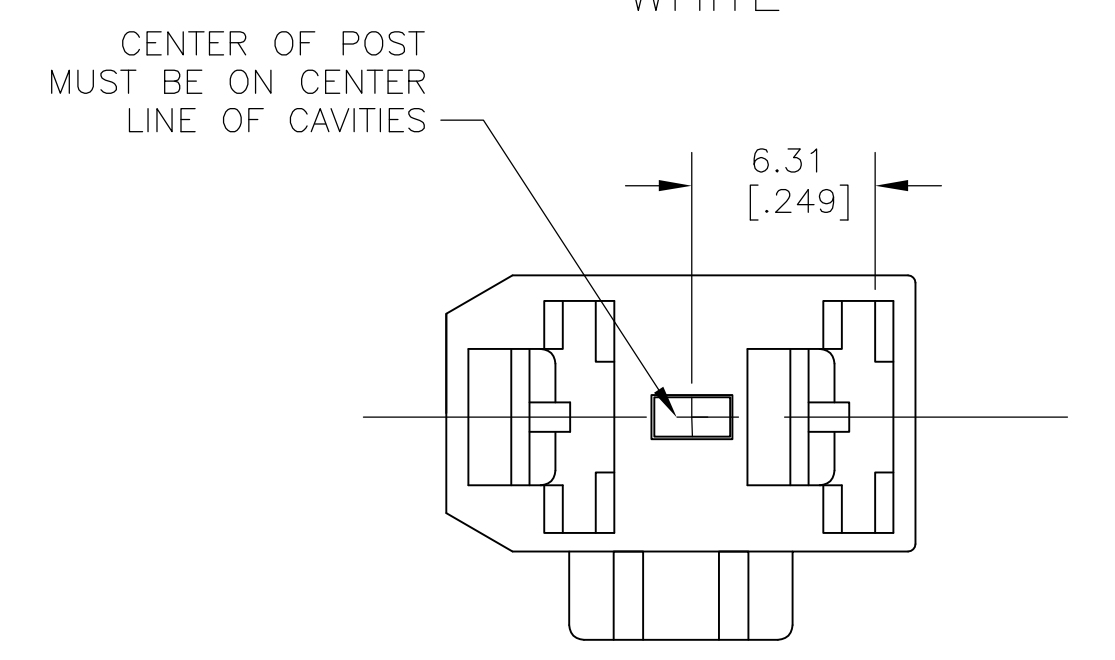
KEYING FOR -1 & -7 PART WHITE



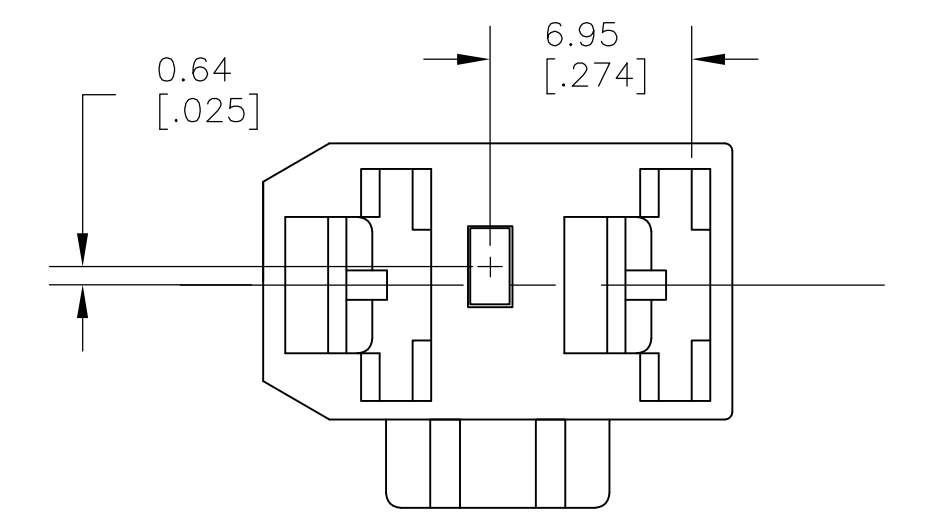
KEYING FOR -3 PART YELLOW



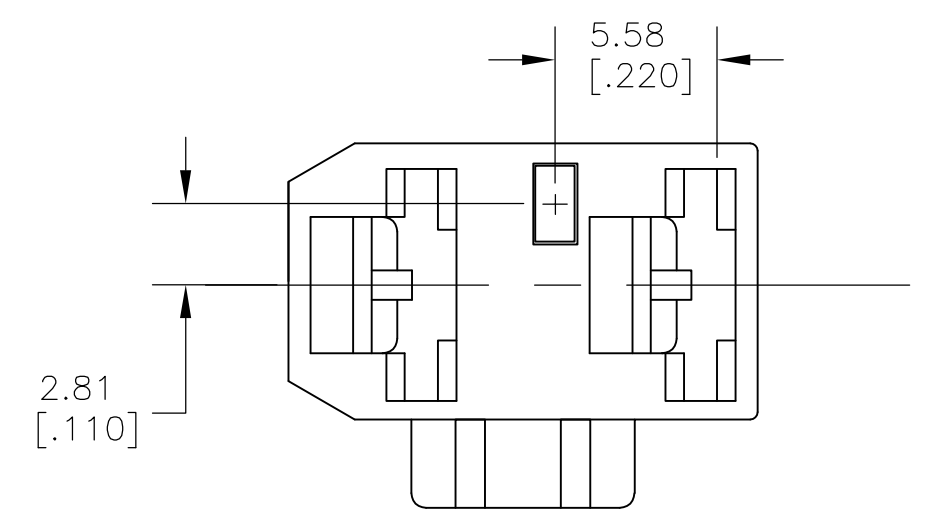
KEYING FOR -5 PART BLUE



KEYING FOR -2 & -8 PART GREEN



KEYING FOR -4 & 1-0 PART BLACK



KEYING FOR -6 PART RED

BLACK	6/6 NYLON, V2	2	1-1969141-0
GREEN	6/6 NYLON, V2	2	1969141-8
WHITE	6/6 NYLON, V2	2	1969141-7
RED	66, NYLON, V0	2	1969141-6
BLUE	66, NYLON, V0	2	1969141-5
BLACK	66, NYLON, V0	2	1969141-4
YELLOW	66, NYLON, V0	2	1969141-3
GREEN	66, NYLON, V0		1969141-2
WHITE	66, NYLON, V0		1969141-1
COLOR	MATERIAL		PART NO

THIS DRAWING IS A CONTROLLED DOCUMENT.

DIMENSIONS: mm [INCHES]	TOLERANCES UNLESS OTHERWISE SPECIFIED:	0 PLC ± .010	1 PLC ± .010	2 PLC ± .025 [010]	3 PLC ± .010	4 PLC ± .010	ANGLES ± 5°	MATERIAL SEE TABLE	FINISH COLOR - SEE TABLE
DWN jr_ruth 12JUN07 CHK P_DESANTIS 12JUN07 APVD P_DESANTIS 12JUN07 NAME HOUSING, RECEPTACLE, FASTON, 6.35 [.250] SERIES, 2 CIRCUIT PRODUCT SPEC APPLICATION SPEC SIZE CAGE CODE DRAWING NO A1 00779 1969141 WEIGHT SCALE 4:1 SHEET 1 OF 1 REV A5		Tyco Electronics Corporation Harrisburg, PA 17105-3608 RESTRICTED TO CUSTOMER DRAWING							